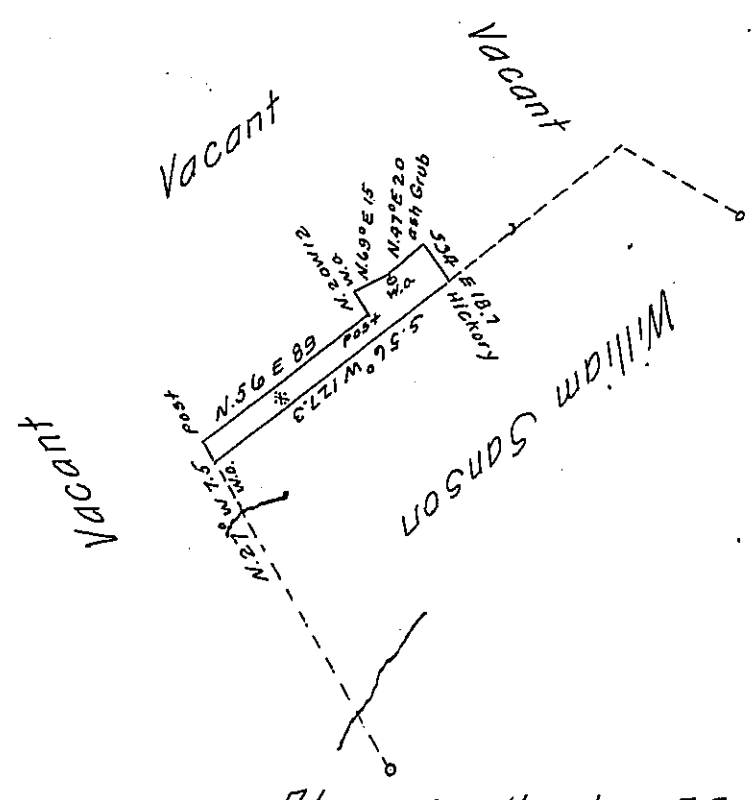


*N.B. The Imp^t upon this tract
is a small field first begun about 1st April
1814.*

*To R.T.L. Esquire
Surveyor General*

John Wells Deputy-



*Situate on the Banks of Bens Creek in Jenner Township Somerset
County & Surveyed the 20th day of June 1815 In Pursuance of a War-
rant dated the 8th of March 1815. Granted to Alexander Hanlon*

*To Richard T. Leech Esquire } John Wells Deputy-
Surveyor General of Penns^a }*

*IN TESTIMONY that the above is a copy of the original remaining on file in
the Department of Internal Affairs of Pennsylvania, made
comformably to an Act of Assembly approved the 16th day of
February 1833, I have hereunto set my hand and caused
the Seal of said Department to be affixed at Harrisburg,
this fifth day of February 1908.*

Henry Howes
Secretary of Internal Affairs.